

Erica



Erica means Heather in Italian. I designed this shawl thinking about late summer. It is my way to say goodbye to the season, as heather uses to bloom during the last weeks of August in the moorland of Northern Europe. At that time, clouds usually gather, preparing for Autumn rain, so the sky is usually wrapped in a thin light grey mist. Lakes and rivers are bluer than ever, the water seems deeper and cooler. Even if the sun feels warm, the wind starts to turn chilly. It is the perfect time to wear a soft embrace, and Erica knows very well how to bring comfort to those early shivers.



A note from the author

Everything you knit or crochet, from the smallest amigurumi to the largest blanket, from the easiest scarf to the most complicated lace shawl, always carries a little piece of you. Along with your thread of yarn, you are weaving your emotions, your wishes, your past, present and future: your story. That is why I always say that what we craft tells its unique tale. When you gift your creation to someone, that tale expands and embrace that other person, his or her life and emotions. It becomes a link between the two of you, a bridge crossing two worlds, a string connecting two hearts. This is maybe one of the most beautiful thing your talent and dedication can do. Gifting your creation to someone, or even to yourself, will bring you the purest happiness you can find. That pure happiness can only be crafted.

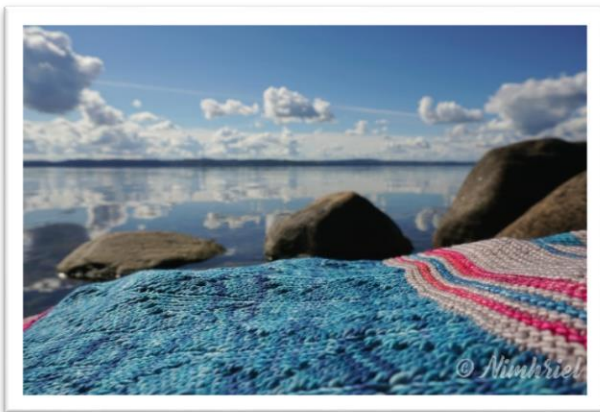


Please, share your progresses and finished masterpiece on Instagram and Facebook using the hashtag #craftingtaleserica. I would love to see your adaptations of my pattern! Of course, if you need any help with the pattern or if you have questions, feel free to ask on the Ravelry page, or contact me on Instagram, my blog or Facebook.

I hope you enjoy knitting this shawl as I did. Know that if you choose to use your precious time to make your creation with this pattern, I will be honored.

Thanks for downloading and for your comments.

Crafting Tales by Nimhriel



Pattern

Erica is a triangular shawl knitted sideways with different kinds of lace and stripes. It measures approximately 140 x 160 cm / 55 x 62 ½", wingspan 212 cm / 83" (washed and blocked).

Material

- Yarn: 3 skeins of Malabrigo Mechita in color Pearl (Grey), Pegaso (Blue) and English Rose (Pink) or any fingering weight yarn for about 1155 m/ 1260 yards in 3 different colours.
- Needle (straight or circular) size 3,5 mm
- Scissors
- Tapestry needle
- Optional: stitch markers

Gauge

25 sts x 40 rows in 10 x 10 cm/ 4 x 4" in Garter Stitch unblocked, 22 x 36 blocked.

Level

Advanced intermediate

Abbreviations

St, sts Stitch, stitches

K Knit

P Purl

SSK Slip 2 stitches as if to knit, knit them together through the back loop

YO Yarn over

K2TOG Knit 2 stitches together

GS Garter stitch

GSR Garter Stitch Ridge (two rows of GS)

KFB Knit in the front and in the back of the same stitch (increase)

A Lace pattern A

B Lace pattern B

(), ** Repeat the sequence between the symbols

Pattern notes

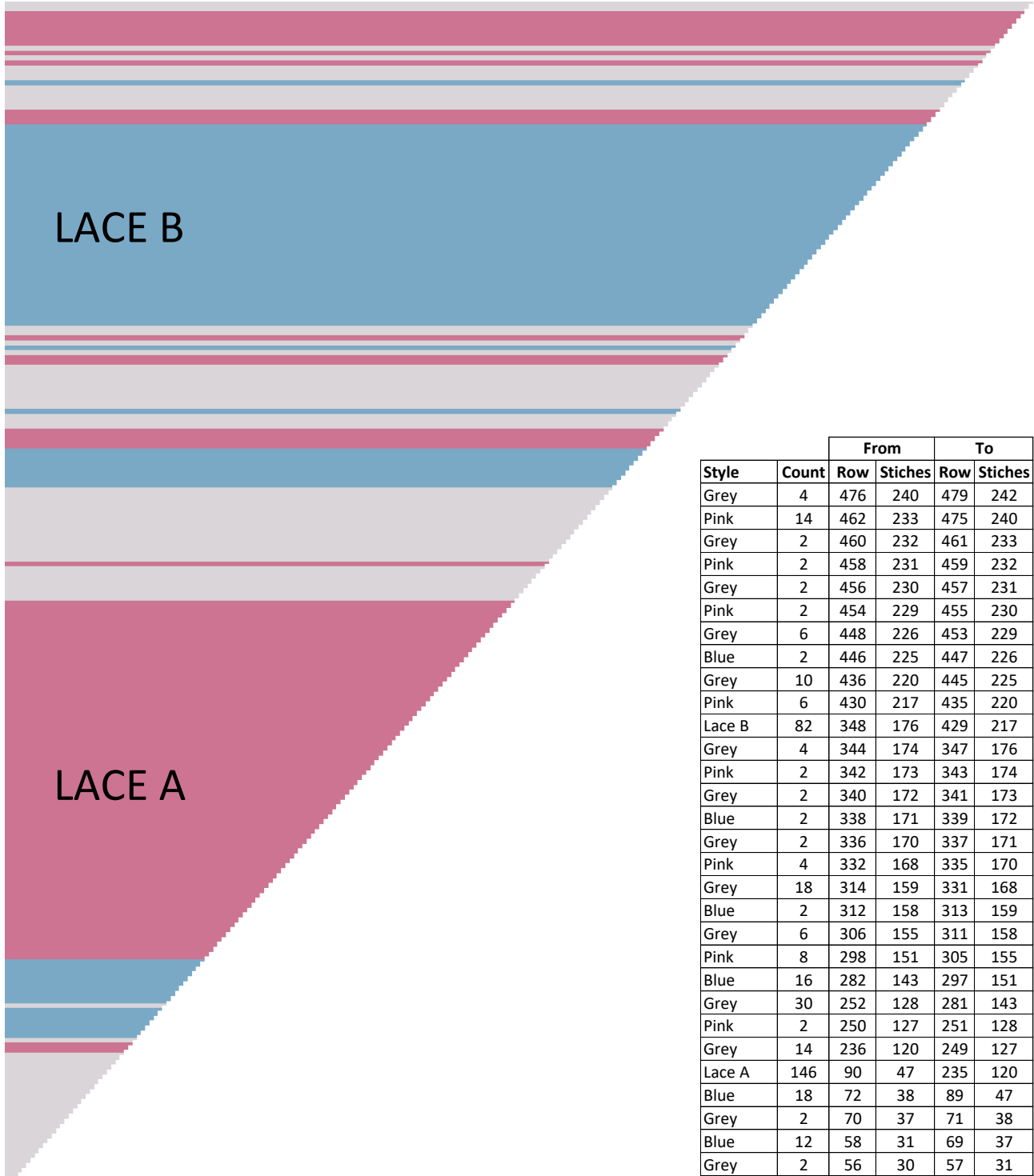
Joining a new colour: since I want to have a nice straight edge, I prefer to cut the yarn every time I join a new color. If you want you can also try to carry the yarn on the side, especially if you plan to finish the shawl with a knitted or crochet border.

I recommend to weave in the tails on every colour change once in a while. Otherwise you will probably get bored weaving them all together at the end of the shawl!

Slipping stitches for edge: in Garter Stitch, I always knit all the stitches or slip the first one knitwise with the yarn in the back, so when I turn the piece the yarn will be wrapped around the first stitch creating a nice edge. You can use the method you prefer. If you want, you can even knit an additional little border picking up stitches around the shawl or use a crochet hook for a little single crochet finish. If you decide to do so, please, consider that you may need more yarn!

Colours: I chose grey, blue and pink to represent my idea of late summer and heather fields; of course you can choose your favorite colours! A nice substitute for grey could be a moss green, for example, and a deep green in place of the blue. You can also swap the heather colour with a bright yellow for a cheerful gorse field, if you like. Feel free to pick your own colours and be inspired by nature!

Summary



| Style | Count | From | | To | |
|--------|-------|------|---------|-----|---------|
| | | Row | Stiches | Row | Stiches |
| Grey | 4 | 476 | 240 | 479 | 242 |
| Pink | 14 | 462 | 233 | 475 | 240 |
| Grey | 2 | 460 | 232 | 461 | 233 |
| Pink | 2 | 458 | 231 | 459 | 232 |
| Grey | 2 | 456 | 230 | 457 | 231 |
| Pink | 2 | 454 | 229 | 455 | 230 |
| Grey | 6 | 448 | 226 | 453 | 229 |
| Blue | 2 | 446 | 225 | 447 | 226 |
| Grey | 10 | 436 | 220 | 445 | 225 |
| Pink | 6 | 430 | 217 | 435 | 220 |
| Lace B | 82 | 348 | 176 | 429 | 217 |
| Grey | 4 | 344 | 174 | 347 | 176 |
| Pink | 2 | 342 | 173 | 343 | 174 |
| Grey | 2 | 340 | 172 | 341 | 173 |
| Blue | 2 | 338 | 171 | 339 | 172 |
| Grey | 2 | 336 | 170 | 337 | 171 |
| Pink | 4 | 332 | 168 | 335 | 170 |
| Grey | 18 | 314 | 159 | 331 | 168 |
| Blue | 2 | 312 | 158 | 313 | 159 |
| Grey | 6 | 306 | 155 | 311 | 158 |
| Pink | 8 | 298 | 151 | 305 | 155 |
| Blue | 16 | 282 | 143 | 297 | 151 |
| Grey | 30 | 252 | 128 | 281 | 143 |
| Pink | 2 | 250 | 127 | 251 | 128 |
| Grey | 14 | 236 | 120 | 249 | 127 |
| Lace A | 146 | 90 | 47 | 235 | 120 |
| Blue | 18 | 72 | 38 | 89 | 47 |
| Grey | 2 | 70 | 37 | 71 | 38 |
| Blue | 12 | 58 | 31 | 69 | 37 |
| Grey | 2 | 56 | 30 | 57 | 31 |
| Pink | 4 | 52 | 28 | 55 | 30 |
| Grey | 51 | 1 | 3 | 51 | 28 |

Directions

Section 1 – Stripes

Cast on 2 sts with Grey.

Row 1 (WS): K1, KFB (3 sts).

Row 2 (RS): K to end

Row 3: K to last st, KFB (4 sts)

Row 2 and 3 form a GSR.

Knit GSR: 24 Grey, 2 Pink, 1 Grey, 6 Blue, 1 Grey, 9 Blue.

Section 2 – Lace Pattern A

(See Chart A

and Chart A.0 below)

Setup ridge

Row 1: Knit to end with Pink.

Row 2: K6, P to the last 5 sts, K4, KFB (47 sts).

Lace section A

(24 rows repeat)

Row 2 and every WS row: K6, P to last 5 sts, K4, KFB.

Row 1 (RS): K6, *SSK twice, YO, (K1, YO) 3 times, K2TOG twice, K1* 3 times, K6.

Row 3: K to end.

Row 5: K8, *YO, K1, YO, K2TOG twice, K1, SSK twice, (YO, K1) twice* 3 times, K6.

Row 7: as Row 3.

Row 9: K6, YO, K1, K2TOG, K1, *SSK twice, YO, *K1, YO* 3 times, K2TOG twice, K1* 3 times, K6.

Row 11: as Row 3.

Row 13: K6, SSK twice, *YO, K1* twice, *YO, K1, YO, K2TOG twice, K1, SSK twice, (YO, K1) twice* 3 times, K6.

Row 15: as Row 3.

Row 17: K8, YO, K1, YO, K2TOG twice, K1, *SSK twice, YO, *K1, YO* 3 times, K2TOG twice, K1* 3 times, K6.

Row 19: as Row 3.

Row 21: K6, YO, K1, K2TOG, K1, SSK twice, *YO, K1* twice, *YO, K1, YO, K2TOG twice, K1, SSK twice, (YO, K1) twice* 3 times, K6.

Row 23: as Row 3.

(60 sts at the end of Row 24)

Rows 25 - 48: as Rows 1 - 24 but Rep Lace pattern A 4 times (72 sts).

Rows 49 - 72: as Rows 1 - 24 but repeat Lace pattern A 5 times (84 sts).

Rows 73 - 96: as Rows 1 - 24 but repeat Lace pattern A 6 times (96 sts).

Rows 97 - 120: as Rows 1 - 24 but repeat Lace pattern A 7 times (108 sts).

Rows 121 - 144: as Rows 1 - 24 but repeat Lace pattern A 8 times (120 sts).

Section 3 - Stripes

Knit GRS: 7 Grey, 1 Pink, 15 Grey, 8 Blue, 4 Pink, 3 Grey, 1 Blue, 9 Grey, 2 Pink, 1 Grey, 1 Blue, 1 Grey, 1 Pink, 2 Grey (176 sts).

Section 4 - Lace Pattern B

(See Chart B

below)

Setup ridge

Row 1: Knit to end with **Blue**.

Row 2: K6, P to the last 5 sts, K4, KFB (177 sts).

Lace section B

Row 2 and every WS row: K6, P to last 5 sts, K4, KFB.

Row 1 (RS): K9, YO, SSK, *K6, YO, SSK* 20 times, K6.

Row 3: K8, YO, K2, SSK, *K4, YO, K2, SSK* 20 times, K6.

Row 5: K8, YO, K3, SSK, *K3, YO, K3, SSK* 20 times, K6.

Row 7: K6, *K2, YO, K4, SSK* 21 times, K6. (180 sts)

Row 9: K7, *K1, YO, K5, SSK* 21 times, K6.

Row 11: K8, *YO, K6, SSK* 21 times, K6.

Row 13: K9, *K2, YO, K4, SSK* 21 times, K6.

Row 15: K10, *K3, YO, K3, SSK* 21 times, K6.

Row 17: K7, YO, K2, SSK, *K4, YO, K2, SSK* 21 times, K6.

Row 19: K9, YO, K1, SSK, *K5, YO, K1, SSK* 21 times, K6.

Row 21: K11, YO, SSK, *K6, YO, SSK* 21 times, K6.

Row 23: K6, *K4, YO, K2, SSK* 22 times, K6. (188 sts)

Row 25: K7, *K3, YO, K3, SSK* 22 times, K6.

Row 27: K8, *K2, YO, K4, SSK* 22 times K6.

Row 29: K9, *K1, YO, K5, SSK* 22 times, K6.

Row 31: K10, *YO, K6, SSK* 22 times, K6.

Row 33: K11, *K2, YO, K4, SSK* 22 times, K6.

Row 35: K7, YO, K3, SSK, *K3, YO, K3, SSK* 22 times, K6.

Row 37: K9, YO, K2, SSK, *K4, YO, K2, SSK* 22 times, K6.

Row 39: K6, *K5, YO, K1, SSK* 23 times, K6. (196 sts)

Row 41: K7, *K6, YO, SSK* 23 times, K6.

Row 43: K8, *K4, YO, K2, SSK* 23 times, K6.

Row 45: K9, *K3, YO, K3, SSK* 23 times, K6.

Row 47: K10, *K2, YO, K4, SSK* 23 times, K6.

Row 49: K11, *K1, YO, K5, SSK* 23 times, K6.

Row 51: K12, *YO, K6, SSK* 23 times, K6.

Row 53: K7, YO, K4, SSK, *K2, YO, K4, SSK* 23 times, K6.

Row 55: K6, *K3, YO, K3, SSK* 24 times, K6. (204 sts)

Row 57: K7, *K4, YO, K2, SSK* 24 times, K6.

Row 59: K8, *K5, YO, K1, SSK* 24 times, K6.

Row 61: K7, YO, SSK, *K6, YO, SSK* 24 times, K6.

Row 63: K6, YO, K2, SSK, *K4, YO, K2, SSK* 24 times, K6.

Row 65: K6, YO, K3, SSK, *K3, YO, K3, SSK* 24 times, K6.

Row 67: K6, YO, K4, SSK, *K2, YO, K4, SSK* 24 times, K6.

Row 69: K6, YO, K5, SSK, *K1, YO, K5, SSK* 24 times, K6.

Row 71: K6, *YO, K6, SSK* 25 times, K6. (212 sts)

Row 73: K7, *K2, YO, K4, SSK* 25 times, K6.

Row 75: K8, *K3, YO, K3, SSK* 25 times, K6.

Row 77: K9, *K4, YO, K2, SSK* 25 times, K6.

Row 79: K7, YO, K1, SSK, *K5, YO, K1, SSK* 25 times, K6.

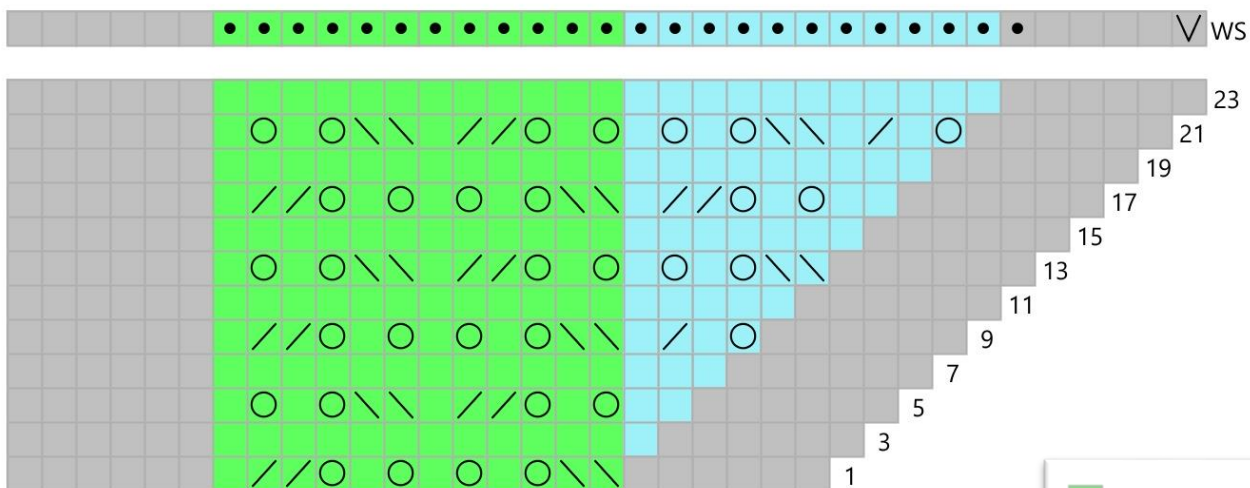
(217 Sts at the end of Row 80)

Section 5 – Stripes

Knit GRS: 3 Pink, 5 Grey, 1 Blue, 3 Grey, 1 Pink, 1 Grey, 1 Pink, 1 Grey, 7 Pink, 2 Grey (242 sst).

Bind off with Grey.

Chart A



| | |
|--|----------------|
| ■ | Pattern repeat |
| ■ | Selvedge sts |
| ■ | GS border |
| ● | P |
| ∇ | KFB |
| ∖ | SSK |
| / | K2tog |
| ○ | yo |

Chart A.0

Each square represents a repetition as detailed in Chart A.

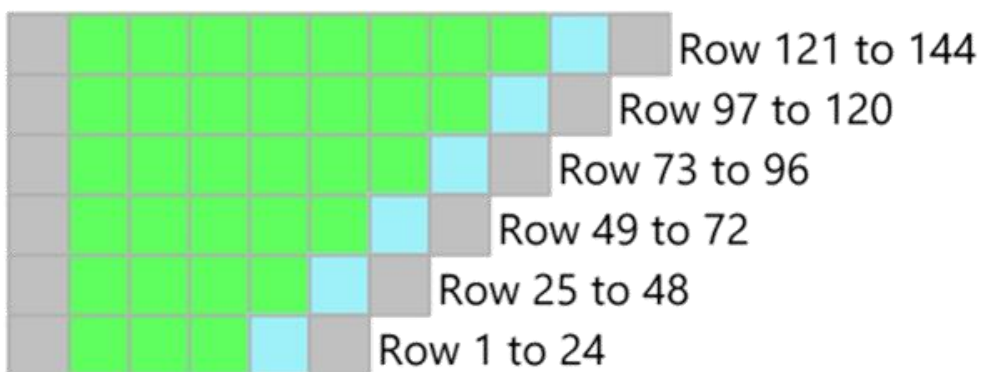
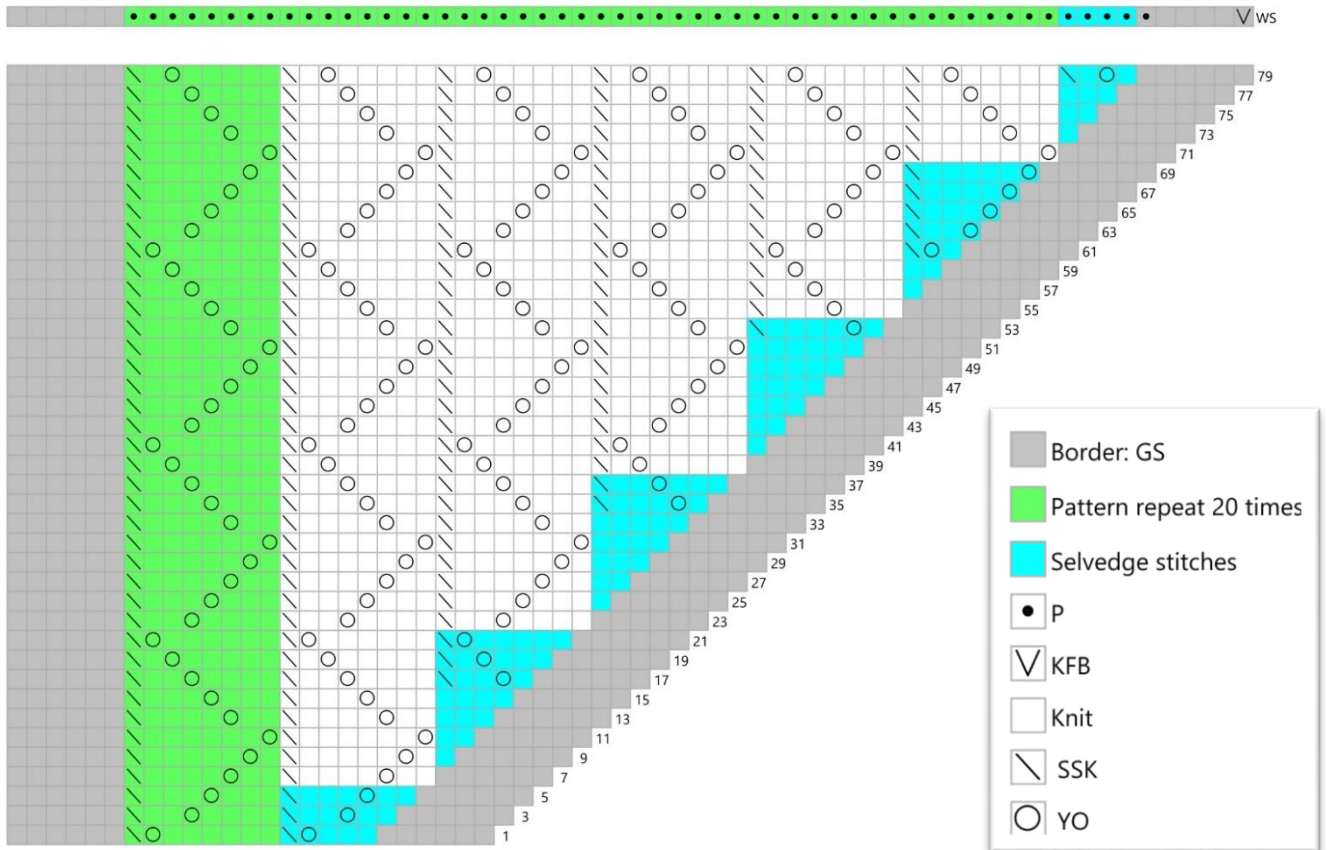


Chart B



Blocking

Wet blocking is recommended. Stretch the shawl to measurement and pin the corners at 45 degrees.

Crafting Tales by Nimhriel

Disclaimer

Copyright 2017 Gaia Tarantino. All rights reserved. This pattern is my own design and property. The download of the pattern constitutes your agreement to use it only for personal purpose. Items made from this pattern may be sold but only crediting the designer. The pattern itself may not be copied in whole or in part, sold, or distributed in any way. No unauthorized reproduction or use of the texts and photos is allowed.

